

Sunderland City Council

Supported Housing Developments



Developing our approach

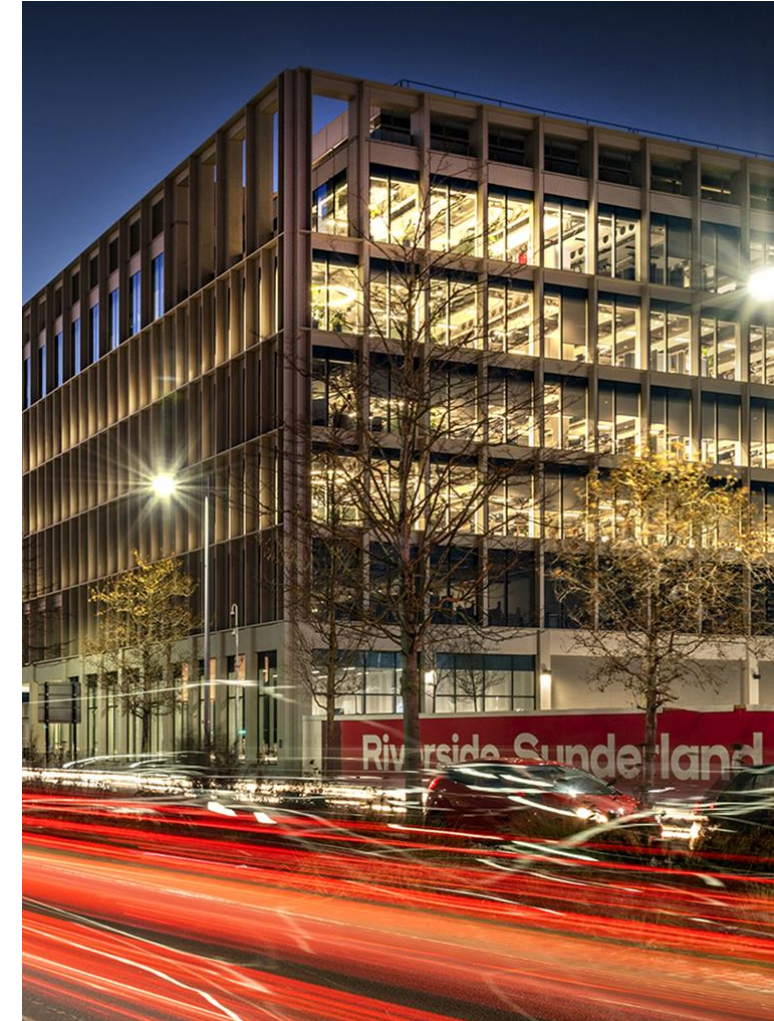
Strategic need for supported housing:

- Learning Disabilities
- Physical Disabilities
- Mental Health

Close working between Housing Development Team & ASC throughout development

ASC involved in early design stage

Design decisions made with the end user in mind





Albert Place, Washington



4 Category 3 bungalows :

Wheelchair user bungalows all fully equipped with assistive technology

- Start on site – September 2020
- Practical Completion – September 2021
- Contract Value – £760,102
- Grant Funding – £172,000



Valiant Close

- 16 Category 3 bungalows : Wheelchair user bungalows
- 1 General Needs bungalow
- All homes fully equipped with assistive technology
- Physical Disability Day Resource Centre
- Start on site – July 2020
- Practical Completion – October 2022
- Contract Value – £3,952,279
- Grant Funding – £765,000



The Old School, Washington

- Refurbishment & extension of existing derelict school
- Provide 15 1-bed apartments for customers on the Mental Health pathway. Scheme has communal areas and support staff space
- Low carbon and renewable energy
- Start on site – June 2022
- Practical Completion – August 2023
- Contract Value – £2,746,233
- Grant Funding – £600,000



**Sunderland
City Council**



Hylton Road

- Demolition of derelict hospital
- Construction of 18 1-bed bungalows for supported living.
- 1 1-bed bungalow for support staff

- Start on site – February 2023
- Practical Completion – July 2024
- Contract Value – £2,286,992
- Grant Funding – £954,000

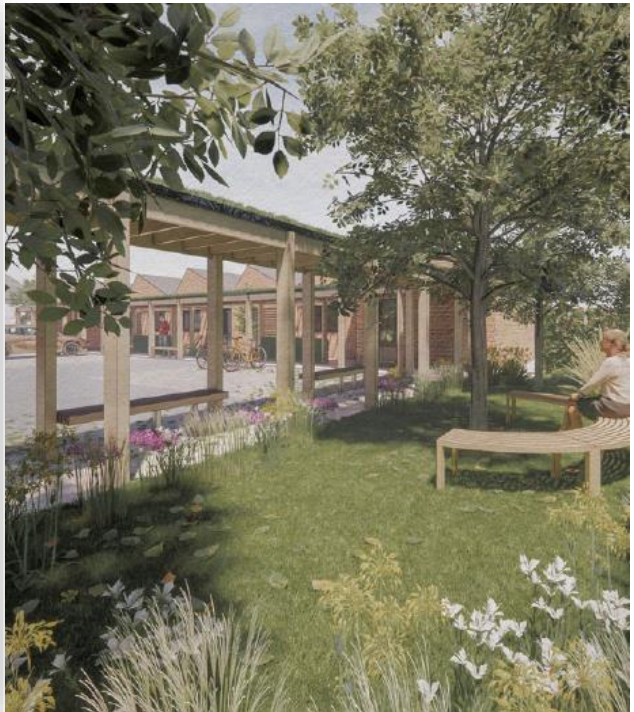




St Cuthbert's Church site



- Demolition of derelict church
- Construction of 6 Category 3: Wheelchair user bungalows (12 tenancies)
- Low carbon & renewable energy
- Start on site – February 2024
- Practical Completion – Est. March 2025
- Contract Value – £2,546,417
- Grant Funding – £660k





How we did it

- Wanting to do something different to have a positive impact on the customer and their independence and care
- Clear strategic alignment
- Collaboration and having a shared vision
- Doing things differently – giving ASC the design lead
- Utilising the strengths, skills and experience of all teams and professionals
- Learning from the experiences and using lessons learnt on next projects

**Sunderland
City Council**



Working Collaboratively: Adult Social Care

- Longstanding relationships across commissioning and social care and ICB
- Pre -Transforming Care developing a commissioning intentions database to help predict and prioritise demand
- Learning with each supported living development, and taking learning forward
- Developing links and relationships with range of RPs
- Enabling social workers to think creatively about accommodation as environments including Technology enabled care solutions aligned to strengths based and person centred practice
- Work closely with person and provider to be involved from start/as early as possible.

**Sunderland
City Council**



Working Collaboratively: Adult Social Care

- Key learning Points:
- Involvement from the Commissioning team - enables specialist knowledge and relationships with the Provider market.
- Start small- make it work in one area/scheme first – Learning Disabilities- now Mental Health and moving into Older People, shared learning and mixed schemes
- Everyone needs to buy in to way of working and share responsibility- not adding people to a list for someone else to find a solution- co-designing and developing solutions with the person/advocates/teams.
- Supporting ASC workers, health professionals and Support providers to translate what is important to the person into an accommodation/environment.

**Sunderland
City Council**