



Housing, Health and Care Programme: Next Steps

Jacqueline Myers, Chief Strategy Officer

Part of:

**North East North Cumbria
Health & Care Partnership**



Housing, Health and Care Programme

- The Region's sector-led housing improvement activity.
- Working together to ensure a joined-up approach across the region on three key areas of action
- We want our citizens to be able to say: *I am healthy, I can live the life I want to live and do the things that are important to me as independently as possible.*



Programme priorities



Complex Care: We will identify where we need integrated models of support to reduce the number of people in or at risk of long-term hospital care

Older People: We will identify and provide choices to live independently

Warm and Dry: We will identify and reduce non-decent and/or cold and damp homes across both rented sectors

From evidence to action: Our baseline

- The Housing Learning and Improvement Network (LIN) worked with the programme team to gather data and stakeholder insights between January and July 2024
- Setting out the evidence of need, stakeholder perspectives, and recommendations for each of the priorities.
- The full report and supporting data will be published on our website

Older people

- **28% increase in over 65 population by 2039**
- **Dementia prevalence above national average, and increasing dementia-related care admissions**
- **Almost 1 in 5 older people experience income deprivation**
- **525 homes needed to divert 10% of older people from care**

- ⇒ **Care-ready and age-designated homes across types and tenures, including retirement living, sheltered housing, and Extra Care**
- ⇒ **Better access to adaptations and support to 'age in place'**
- ⇒ **Integrated urgent community response services for older people across our places**

Gross housing need – older people

Across the region, we need 526 homes every year to divert 10% of older people from residential care, a rate of 18 per 100,000 of the total population

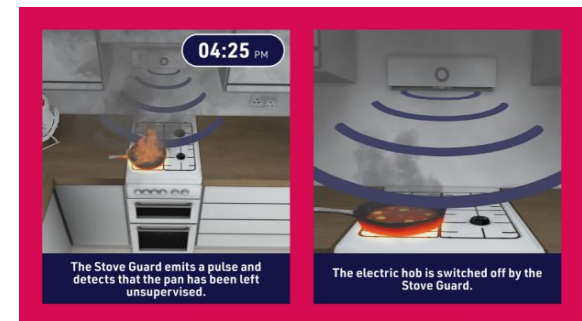
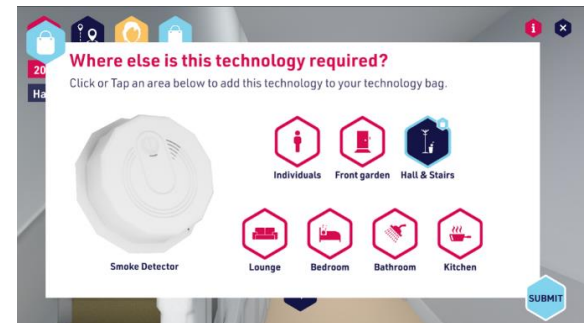


*Data on older people in residential care funded by Stockton and South Tyneside was not available



TSA's Virtual Home

- Offers two levels of immersive training for teams to develop awareness and confidence in Technology Enabled Care
- Different property and service model types to help explore alternatives
- Inclusive, outcome-focussed, and legally compliant assessment tool
- Over 1,500 users, and 500 people completed the first level training
- Available to all housing, health, and care organisations in the region until October 2025



Warm and Dry

- 33,500 homes in the region are cold or damp
- 19.6% of private rented and 6.6% of social rented homes have a category 1 hazard
- COPD and childhood asthma prevalence above the national average
- Complex relationship between property standards, behaviour, and poverty

- ⇒ Joined up approaches to data sharing, targeting interventions, and tracking outcomes
- ⇒ Common pathways and tools to identify and remedy damp and cold
- ⇒ Implementing and scaling up best practice regionally
- ⇒ Support for people and professionals

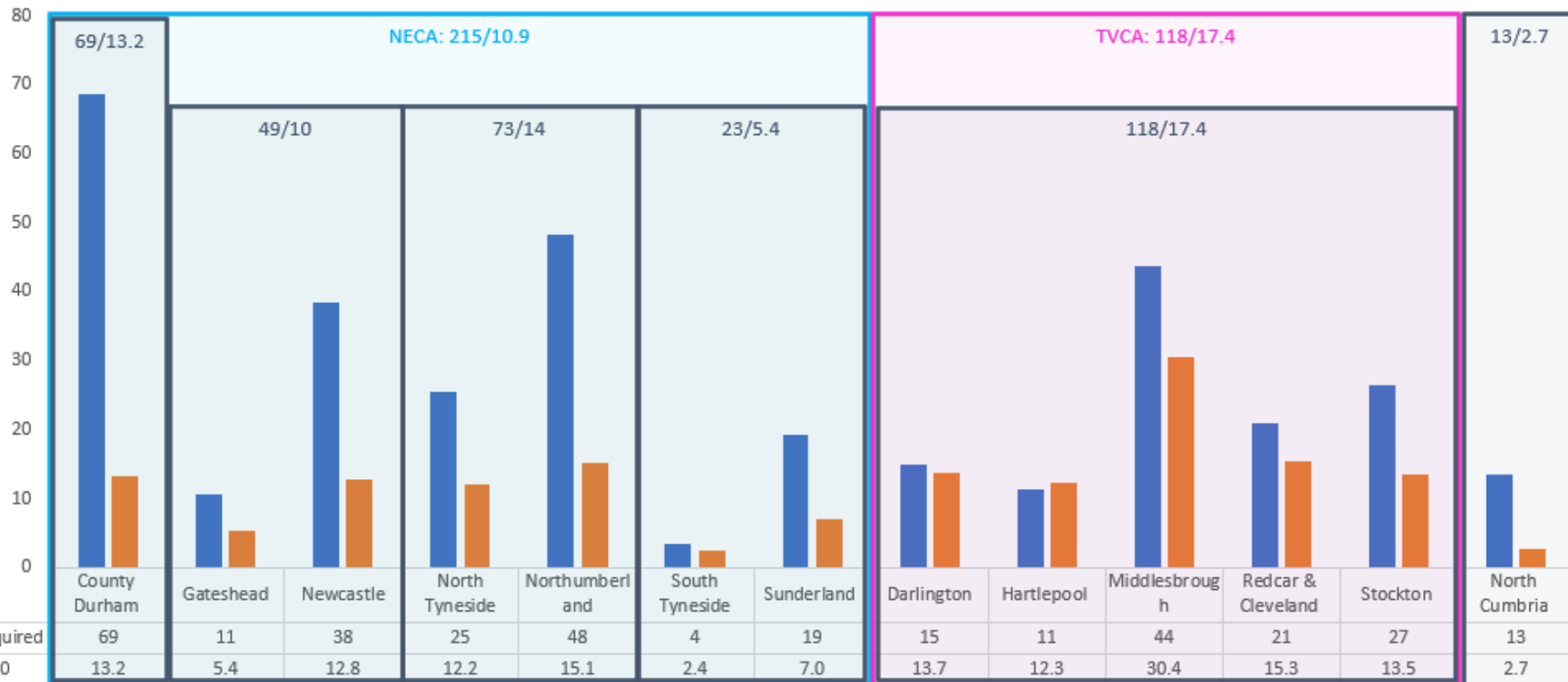
Complex Care

- **Approximately 3,200 people who may need complex care and support**
- **Gaps in provision to support people with intersecting needs and experiences**
- **A changing profile of people who are in hospital**
- **350 homes needed every year for people who need complex care and support**

- ⇒ **A better understanding of long-term need and demand**
- ⇒ **A regional/sub-regional approach to market shaping, planning, commissioning, and delivery**
- ⇒ **Better access to a wider range of high standard homes across types and tenures**

Gross housing need – complex care

Across the region, we need to find or build 350 homes every year for people who need complex care and support, a rate of 11 per 100,000 of the total population





Better homes and healthier lives

Our five year plan 2024 – 2029



More warm and dry homes

Our challenge: To reduce the (approximately) 33,500+ homes which are damp and cold



Supporting older people to live independently

Our challenge: Ensure suitable homes for a growing and aging population living with multiple long term conditions



Better homes with support for people with complex needs

Our challenge: To provide more accessible, adaptable and affordable homes

We will:

- ✓ Share good practice
- ✓ Create new referral routes
- ✓ Make better use of data to target our work
- ✓ Attract investment to fund heating and insulation improvement

- ✓ Maximise access to home adaptations
- ✓ Agree design standards for 'care ready' homes
- ✓ Promote dementia friendly housing approaches
- ✓ Build more Extra Care homes for older people

- ✓ Develop an integrated strategy for complex care
- ✓ Agree design standards for new homes
- ✓ Promote different housing options, including ownership
- ✓ Build more suitable homes for people with complex needs

In 5 years:


 Fewer homes that are cold and damp


 Fewer homes with other hazards

 Better use of resources

 More older people living at home

 Better quality homes that support people to age well


 10% fewer older people in residential care or hospital

 2,625 units of extra care

 More of the right type of housing

 Fewer people in hospital

 Better access to the right homes

 1,750 extra suitable homes

Collaboration
Working together across health, local authorities, housing and VCSE sector

Technology
Making the best use of technology to support independence

Data
Using insights to target our work and develop data sharing

Framework and standards
Jointly developed across the region to achieve fewer category 1 homes

Resources
Joining up resources, working at scale across sectors and supporting our workforce

Be the best at getting better
Sharing and scaling-up best practice



A collective commitment

We have developed a Memorandum of Understanding that:

- Provides a framework for collective action across North East and North Cumbria Housing, Health and Care organisations
- Sets out a shared commitment to joint working, with co-production at the heart of what we do
- Emphasises the role of good housing in ensuring good health and wellbeing for citizens
- Sets out our priority actions and shared success criteria
- Ensures oversight and delivery of the MOU and the wider programme

From commitment to action

- The programme will deliver the North East Housing Partnership's health and care workstream
- Developing information, advice, and a toolkit for warm and dry homes, with colleagues in public health
- Combining housing and health data to identify hotspots and target interventions, with the ICB and Karbon Homes
- Agreement in principle from regional planners on accessibility standards for age-friendly homes
- Approval in principle for £8.4m of NHS England capital to enable discharge from mental health inpatient services
- Building a regional 5-year development pipeline

Our ask of the Integrated Care Partnership

- Endorse our plan and direction of travel
- Endorse and sign up to our regional memorandum of understanding on how we'll deliver the work and outcomes over the next five years
- Engage your teams in our key activities across the programme, particularly:
 - Joining up community responses to support older people to age well in their own home
 - A strategy to deliver homes for people who need complex care and support
 - Scaling up our efforts to help people live in a warm and dry home