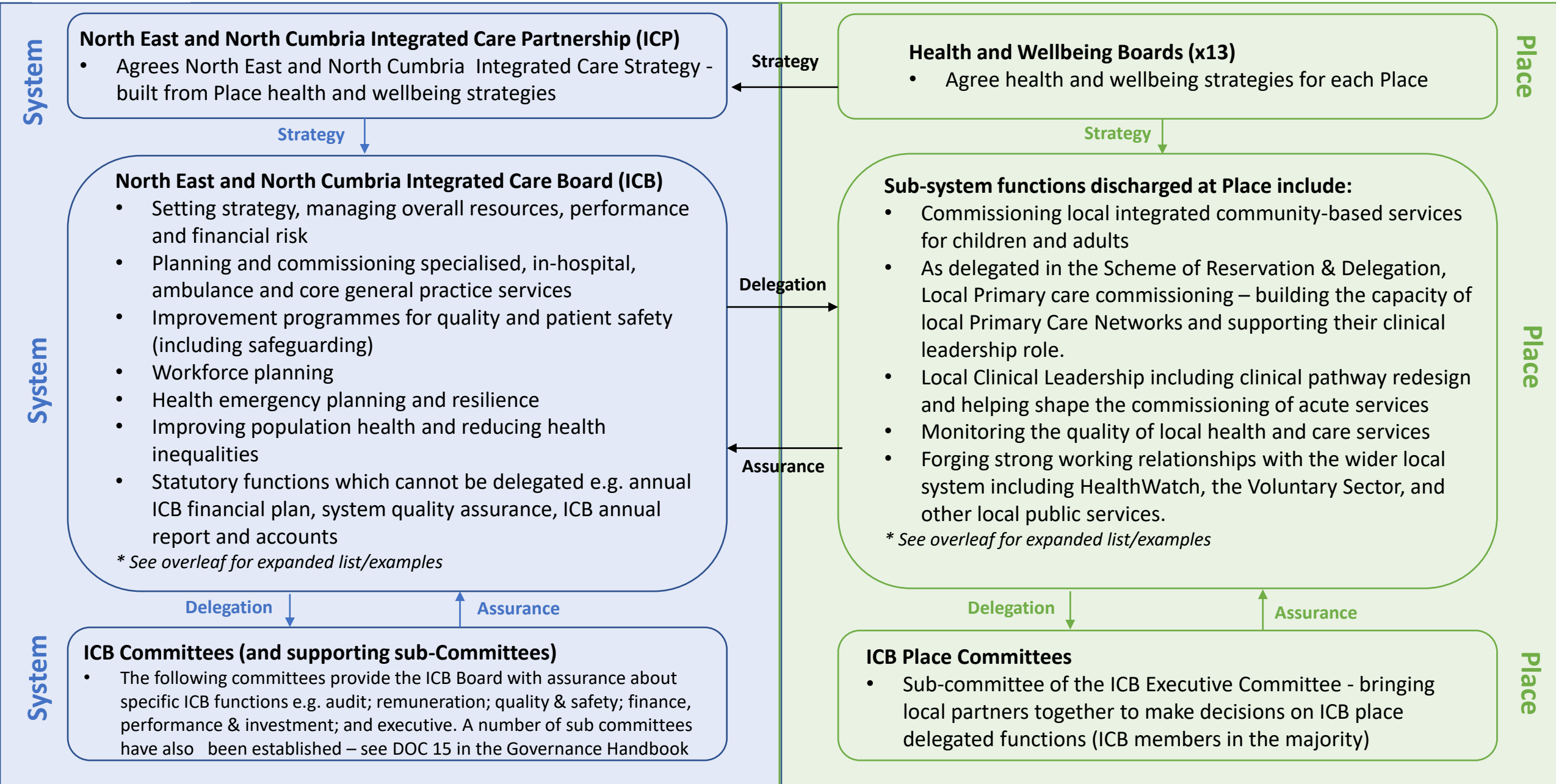


# North East and North Cumbria Integrated Care Board - functions and decisions map v2-0



## North East and North Cumbria Integrated Care Board - functions and decisions map

### ICB functions discharged at system level

- Setting strategy
- Managing overall resources, performance and financial risk
- Planning and commissioning specialised, in-hospital, ambulance and core general practice services
- Improvement programmes for quality and patient safety (including safeguarding)
- Workforce planning
- Horizon scanning and futures
- Harnessing innovation
- Building research strategy and fostering a research ecosystem
- Driving digital and advanced analytics as enablers
- Health emergency planning and resilience
- Improving population health and reducing health inequalities
- Strategic communications and engagement
- Statutory functions which cannot be delegated e.g. annual ICB financial plan, system quality assurance, ICB annual report and accounts

### Sub-system functions discharged at Place\*

- Building strong relationships with communities
- Fostering service development and delivery with a focus on neighbourhoods and communities
- Commissioning local integrated community-based services for children and adults (including care homes and domiciliary care).
- As delegated in the Scheme of Reservation & Delegation, Local Primary care commissioning – building the capacity of local Primary Care Networks and supporting their clinical leadership role.
- Local Clinical Leadership including clinical pathway redesign and helping shape the commissioning of acute services
- Monitoring the quality of local health and care services – including support to care homes, e.g. infection prevention and control.
- Forging strong working relationships with the wider local system including HealthWatch, the Voluntary Sector, and other local public services.
- Monitor Place based delivery of key enabling strategies.

In addition, there are formal place-based joint working arrangements between the NHS and Local Authorities which will also be part of the Integrated Care Board delegated functions; they include:

- Participation in Health & Wellbeing Boards to develop Joint Strategic Needs Assessments and Joint Health & Wellbeing Strategies
- Joint initiatives to promote health, prevent disease and reduce inequalities
- Joint commissioning and leadership of local services:
  - Continuing Health Care
  - Personal Health Budgets
  - Community mental health, learning disability and autism
  - Children and young people's services (including transitions, Special Educational Needs and Disabilities, Looked After Children)
- Service integration initiatives and jointly funded work through, e.g. the Better Care Fund and Section 75.
- Fulfilling the NHS's statutory health advisory role in adults' and children's safeguarding.
- The provision of updates to local Scrutiny Committees and Lead Members on local health and care services.

*\* Some of these functions may have a policy or plan developed at a geography above Place for ICB consistency but the function would be delivered and nuanced at Place*